




**Riverland Energy Cooperative**

Your Touchstone Energy® Partner 



# ANNUAL MEETING PLANS

By Jerry Sorenson, General Manager

The board of directors set March 26, 2022 for the cooperative's annual meeting at the Arcadia High School in Arcadia. It is our hope that we will be able to meet in person. We know our members look forward to the annual meeting each year, and we are hopeful we can provide a traditional one for you. Please keep an eye on our publications for any changes to this meeting.

Prior to the annual meeting, we hold district meetings in accordance with your cooperative's bylaws presenting the opportunity to place names on the ballot for director positions. The fact that we as cooperative members have the right to select our cooperative directors is what sets us apart from other electric utilities. The district meeting also serves as a prelude to the upcoming annual meeting on March 26. The meeting offers members the opportunity to learn more about important issues facing the electric cooperative. Those attending hear the financial position of the co-op, work activities that were completed in 2021, and activities planned in 2022.

## Electronic Voting Details Coming Soon for Director Elections

Again this year, you may vote for your board of directors electronically. We partnered with a third-party vendor to administer the 2022 director election. This year, director elections will be held in Districts 2, 5, and 9. Details will be coming soon as to how you can vote electronically.



*Spare change for community needs.*

## Seeking Grant Applications

We are currently seeking applications for the next cycle of Community Cares grant program. Funds are used for local projects that benefit members of our communities. Examples would be hospice programs, food pantries, health services, medical services, etc. Community Cares funds may not be used for political purposes or to pay electric bills.

To apply for a grant, fill out the application found on our website at [riverlandenergy.com](http://riverlandenergy.com). **Applications are due Feb. 20, 2022.**



## RIVERLAND ENERGY SCHOLARSHIP APPLICATIONS

Riverland Energy is pleased to offer scholarships to area students who want to further their education. Students whose

parents are members of Riverland Energy are invited to apply for these scholarships.

Riverland will award thirty \$1,000 scholarships to students to continue their education in college or tech school in any field. In addition, Riverland Energy will award two \$1,000 Line Worker Scholarships that will be awarded to individuals pursuing a post-secondary education in an electrical line worker program.

Qualifications and applications with more details can be found on our website at [riverlandenergy.com](http://riverlandenergy.com). Applications are due March 15.

## DISTRICT COMMITTEE ELECTION NOTICES

This month, members in Districts 3, 4, and 8 will receive a listing of all the members in their districts who can be nominated to the district committee. Please take the time to exercise your right as a member of this cooperative and vote for representatives in these districts. Those persons elected to the District Committee will be involved in a District Committee meeting, which will take place later in the month of February.

The primary purpose of the district meeting is for member-owners to elect their representative to the co-op's board of directors. Candidates who have met requirements stipulated in the bylaws and who have followed established filing procedures can be considered for election.

Being more than a consumer is the advantage of co-op ownership. You are an owner-member of Riverland Energy Cooperative and as such have the privilege of electing representation to the co-op's governing body.

# RIBBON CUTTING HELD FOR MOST RECENT RIVERLAND ENERGY COOPERATIVE SOLAR PROJECT

The Stromland solar project ribbon-cutting ceremony was held on November 18 at the site located off of Prairie Moon Road in Cochrane. The system is 3 MW Peak Output with 8,000 panels, enough electricity for approximately 550 homes, and spans approximately 20 acres owned by Greshik Farms.

“The community has been very supportive of the project; it’s a very positive project for the area,” said Riverland Energy General Manager Jerry Sorenson.

The panels were designed to move east to west with the sun and built with the newest technology using bi-facial panels.

“This system is designed to track the sun so they will get the maximum



**l-r: Riverland Energy Board of Directors Cletus Foegen, Gary Dvoracek, Dennis Frame, General Manager Jerry Sorenson, Directors Fran Fedie and Bryce Lisowski.**

generation. The newest bi-facial panels means that there is solar production from the bottom as well as the top of

the panel,” explained Eric Udelhofen, project development director of OneEnergy Renewables.

Stromland Solar, LLC, will be maintained in the summer by grazing sheep to control grass and weeds.

“Riverland Energy is happy to be a part of this project to help provide solar energy at a cost-effective price to its members, while also doing our part to produce clean energy for the communities we serve,” said Sorenson.

Project partners were OneEnergy Renewables, Arch Electric, Inc., Greshik Farms, and Riverland Energy Cooperative.



Students from the C-FC High School science class got to take part in the ribbon-cutting event.

## 2022 ElectricSense® Rebate Program Launched



### Members receive multiple benefits with energy efficient purchases

Members wanting to save energy and money in the new year should review Riverland Energy’s new 2022 ElectricSense® rebate forms. Riverland Energy annually publishes a list of energy efficient items that are eligible for a rebate when a member makes a qualifying purchase and submits the required paperwork.

Eligibility criteria for each category is listed on the forms. Rebates begin at \$0.50 up to \$800 for certain items. To receive a rebate, the member must purchase a qualifying item, fill out the rebate form, and return the form and documentation to the cooperative within three months of

purchase or installation (this will be clarified on the form). Equipment must be installed within the cooperative’s service territory and, in most cases, must be ENERGY STAR® rated. Changes for the 2022 ElectricSense® rebate program include:

- Smart power strips and flow restrictors for faucets and shower heads were removed
- Air-source heat pump rebates increased from \$250/ton to \$300/ton

Rebate forms can be found at one of our offices or online at [riverlandenergy.com](http://riverlandenergy.com).



## BE PREPARED FOR WINTER WEATHER & OUTAGES

If you experience an outage, check to see that the power issue is not on your side of the electric meter. Check fuses and circuit breakers in your home and any disconnect by the meter pole. Call your neighbors to see if the outage involves more than your premises. When calling in an outage, please have this information available:

- Your account
- Name on the electric account
- Service address where outage is occurring
- Phone number where you can be reached
- Cause of outage if known

If you call after business hours or during a widespread outage our call center, Cooperative Response Center (CRC), will answer and assist you. During widespread outages, power is resorted systematically. Attention is given first to substations and main feeder lines, followed by individual members.

### 3 WAYS TO REPORT AN OUTAGE

- Call: 800-927-6206
- SmartHub
- Text: 55050 (must be signed up for this service)

### UPDATE YOUR PHONE NUMBER:

Please make sure we have your up-to-date phone number. Call us at 800-411-9115, or update your phone numbers through SmartHub or through our website. Having your number up-to-date allows our automated phone system to identify your location when you call in an outage.

### LIVE ONLINE OUTAGE MAP

Our outage map shows the location and size of the outage. You can access it from our website with your computer or electronic device.

### COMMUNICATIONS

During large or prolonged outages of 500 or more, updates are posted on our website, [www.riverlandenergy.com](http://www.riverlandenergy.com), and on our Facebook page.

## WINTER ELECTRICAL SAFETY TIPS

In Wisconsin, December through March is a particularly hazardous time of year for storms and electrical power outages. Heavy snow, ice, and wind can ravage power lines, both on the main power grid and at home. Add to that the increased use of home heating equipment such as a space heaters and electric blankets and the potential for dangerous electrical hazards and home fires only intensifies. Keep your home and loved ones safe this season by following these important winter electrical safety tips:

**Use space heaters safely.** Keep them a minimum of three feet from furniture, bedspreads, drapes, or clothes and never leave them unattended when they're on. Don't use extension cords with your space heaters, and always unplug the heaters when they're not in use. Keep space heaters away from wet or damp areas, and never touch a heater when your body is wet.



**Use caution with electric blankets.** Never use an electric blanket while you're sleeping. Make sure the plug and cord are in good shape; otherwise it can pose a fire hazard. Be sure to dispose of electric blankets that have worn or damaged areas.

**Be careful with your kitchen appliances.** While crockpots and other slow-cooking devices get a lot of use in the winter, you should never leave them turned on when no one is home. Leaving them unattended is a major fire risk. And be sure to check electrical kitchen appliances for frayed or damaged cords and plugs before use.

**Make sure your home is equipped with functioning carbon monoxide detectors.** Carbon monoxide (CO) is an odorless gas that kills at high concentrations and causes serious and irreversible injuries at lower levels. Deaths from carbon monoxide poisoning increase during the winter months due to the use of common fuels like natural gas, wood, and coal. Installing an inexpensive carbon monoxide detector can save your family's life.

**Are your smoke alarms in working order?** It's important to make sure that you have an adequate number of smoke alarms throughout your home and that they are functioning properly. Simply push the test button to make sure it beeps and replace the batteries if needed.

**Don't overload circuits or wattage.** Despite the shorter, darker days of winter, don't go above the recommended wattage for your light fixtures. Don't overload wall outlets either, and only plug three-prong cords into three-prong outlets. Use extension cords sparingly and only for temporary purposes.

NOVEMBER Photo Contest  
MOST VOTES



## PHOTO CONTEST

Congratulations to Luann C. for getting the most votes for our November photo contest.

Submit your best photo and encourage your friends to vote! The photo receiving most votes will win a \$25 electric bill credit and will be printed in our magazine, along with a few other favorites. By entering, you will also be entered into a drawing for a \$250 electric bill credit.

The January theme is **Pets**. Photos can be submitted through Jan. 25. Go to our Facebook page or website to submit and vote.



JANUARY PHOTO  
CONTEST

## Pets

Submit your favorite pet photo  
by the 25th for a chance to  
win a \$25 bill credit!

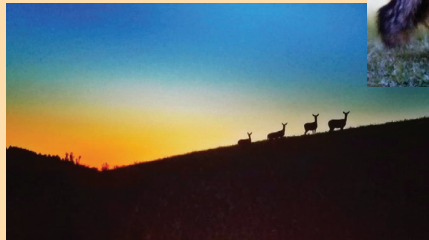


### Some of our other favorite photos submitted for the November contest:



Left: Sparring – Randy S.

Below: Unexpected visitor – Vicki C.



Left: Deer lined up on the hill at dusk – Chrissy T.


**Jerry Sorenson, General Manager**

608-323-3381 • 1-800-411-9115 • [www.riverlandenergy.com](http://www.riverlandenergy.com)

**Beth Alesch, Editor**



**Riverland Energy  
Cooperative**

Your Touchstone Energy® Partner 

#### Arcadia Office

N28988 State Road 93,  
P.O. Box 277,  
Arcadia, WI 54612

#### Holmen Office

1800 Granary St.  
Holmen, WI 54636

#### Outages & Emergencies

Call 1-800-927-6206  
24 hours a day

#### Office Hours

Arcadia: 7:30 a.m.–4:00 p.m.  
Holmen: 7:30 a.m.–4:00 p.m.

#### Officers of the Board of Directors:

David Paudler, Onalaska, President  
Dan Filla, Arcadia, Vice-President  
Dennis Frame, Osseo,  
Secretary/Treasurer