

The Outlet

September 2025

September is National Preparedness Month!

In honor of National Preparedness Month in September, we want to remind members about the power of preparation. While you don't have to achieve a "doomsday prepper" level of preparedness, there are several practical steps you can take to keep you and your family safe.

Here are general guidelines recommended by the Federal Emergency Management Agency:

- Assemble a grab-and-go disaster kit. Include items like nonperishable food, water (one gallon per person, per day), diapers, batteries, flashlights, prescription medications, first-aid kit, battery-powered radio and phone chargers.
- Develop a plan for communicating with family and friends (i.e., via text, social media, third party, etc.).
- Have some extra cash available; during a power outage, electronic card readers and cash machines may not work.
- Store important documents (birth certificates, property deed, etc.) in safe place away from home (for example, a bank safe deposit box).
- Fill your car with gas.
- Organize your supplies so they are together in an easily accessible location that family members know about.
- Bring pets indoors at the first sign of a storm or other emergency. Pets can become disoriented and frightened during severe weather and may wander off during an emergency.

At Riverland Energy, we care about your safety. Planning for an emergency situation today can give you more confidence to deal with severe weather and potential outages in the future.

You're Invited

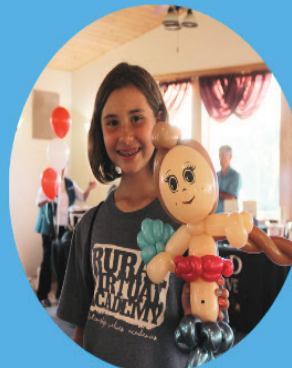
Wednesday, October 8, 2025

4:00 p.m. - 7:00 p.m.

Danzinger Vineyard

S2015 Grapeview Ln Alma, WI 54610

Member Appreciation Day!



• Entertainment:

- Kevin The Balloon Guy
- MadLee Band

• Free Food & Milkshakes

• Games

• Free Registration Gift

• Chance to win electric bill credits

• Kids activities

• Bucket Trucks

• Co-op Information

Wine available for purchase (on your own)



OPERATING STATISTICS

July 2025

	Monthly		Year-to-date	
	2024	2025	2024	2025
KWHS PURCHASED	28,973,735	32,104,347	168,696,029	180,243,513
KWHS SOLD	28,346,405	31,283,051	163,700,764	174,657,196
REVENUE	\$4,424,706	\$4,833,117	\$25,551,542	\$27,245,350
COST OF PURCHASED POWER	\$2,604,684	\$2,853,802	\$14,209,222	\$15,296,884
OTHER EXPENSES	\$1,762,008	\$1,666,229	\$10,685,511	\$11,219,356
OPERATING MARGINS	\$58,014	\$313,086	\$656,809	\$729,110
NON-OPERATING MARGINS	\$4,676	\$4,669	\$71,605	\$188,554
CAPITAL CREDITS-ASSOC. ORGANIZATIONS	\$267,382	\$126,438	\$736,274	\$709,994
TOTAL MARGINS	\$330,072	\$444,193	\$1,464,688	\$1,627,658



HAVE A
SAFE
HARVEST!

Harvest season brings hard work and can be exhausting, but rushing the job to save time can be extremely dangerous (even deadly) when working near overhead power lines. We urge farm operators and workers to keep the following safety tips in mind:

- Use care when operating large machinery near power lines.
- Inspect height of equipment to determine clearance.
- Always keep equipment at least 10 feet away (in all directions) from power lines.
- Remember to lower extensions when moving loads.
- Know what to do and have a plan if you come into contact with an overhead power line. Do not leave the vehicle until utility workers have cut off electricity and confirmed that it is safe to exit the vehicle.
- Know what to do in the rare event the equipment catches fire.
- If a power line is sagging or looks to be dangerously low, please call us immediately.

CHARGE YOUR ELECTRIC
VEHICLE SAFELY



Electric vehicles (EVs) are fun to drive and do not emit exhaust. However, taking proper precautions is essential to a safe charge!

PLUG DIRECTLY INTO AN OUTLET

Never use an extension cord or multi-plug adapter with a charging cord. Instead, plug directly into an appropriate outlet.



USE NAME-BRAND CHARGERS

Charging equipment should be sold or endorsed by the EV manufacturer. This is not the time to bargain hunt!

USE A LICENSED CONTRACTOR

Have a Level 2 charger installed on its own circuit by a professional who will assess if your home can handle the load.



LOOK FOR WEAR AND TEAR

Frequently check for wear and damage to charging cords, plugs and ports, which could present a shock hazard.

FOLLOW THE INSTRUCTIONS

Manufacturers provide important instructions for charging your vehicle. Follow these closely.



KEEP OUT OF REACH

Make it a habit to place all charging components out of children's reach when not in use.

CHECK PUBLIC STATIONS

When using a public charging station, look for excessive wear and damage to the equipment.



REMEMBER

The biggest difference between Level 1 and Level 2 charging is the amount of time it takes to charge a vehicle.

Safe
Electricity.org®

Riverland Energy
Welcomes
New Employee



Cynthia Huber has joined Riverland Energy Cooperative as a Lead Member Account Representative at our Arcadia Office. She will be responsible for processing monthly electric bills, collections, handling member bill inquiries, and processing monthly billing reports.

Cindy has spent her entire life in Alma, Wisconsin, where she shares a home with her husband Jim, and their two dogs, Luna and Ollie. She's the proud mother of two adult daughters and a loving grandmother to her six-year-old grandson. She also enjoys taking Mustang rides with Jim and their friends, going shopping, and spending peaceful days kayaking on the water.

ENERGY EFFICIENCY
TIP OF THE MONTH

Take advantage of "shoulder months," which refer to the transitional periods between peak heating and cooling seasons. During the fall, these milder weeks typically occur between September and November. Shoulder months offer a great opportunity to reduce home energy consumption as the need for extensive heating or cooling is reduced. Look for simple ways to boost indoor comfort without running your heating and cooling system. Use ceiling fans and open windows on breezy days to ventilate your home. On cooler days, add a layer of clothing and avoid running the heat.



Month of September

Billing Date:

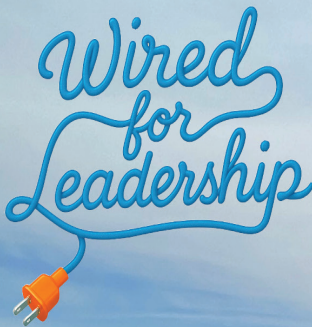
September 1, 2025
(August usage)

Current amount due:

September 30, 2025

Past due balance must be
paid **BEFORE**

September 23, 2025,
to avoid disconnection.



2025-2026
Youth Ambassador Program

Program will run from October to May and will take place during the school day. Meetings will be held at one of our three Riverland Energy Locations.

Applicants must be:

- Current high school juniors
- Passionate about leadership, service, and learning
- Curious about energy, technology, and teamwork

To Apply: Visit <https://www.riverlandenergy.com/youth-ambassador-program> to complete the online application!

